

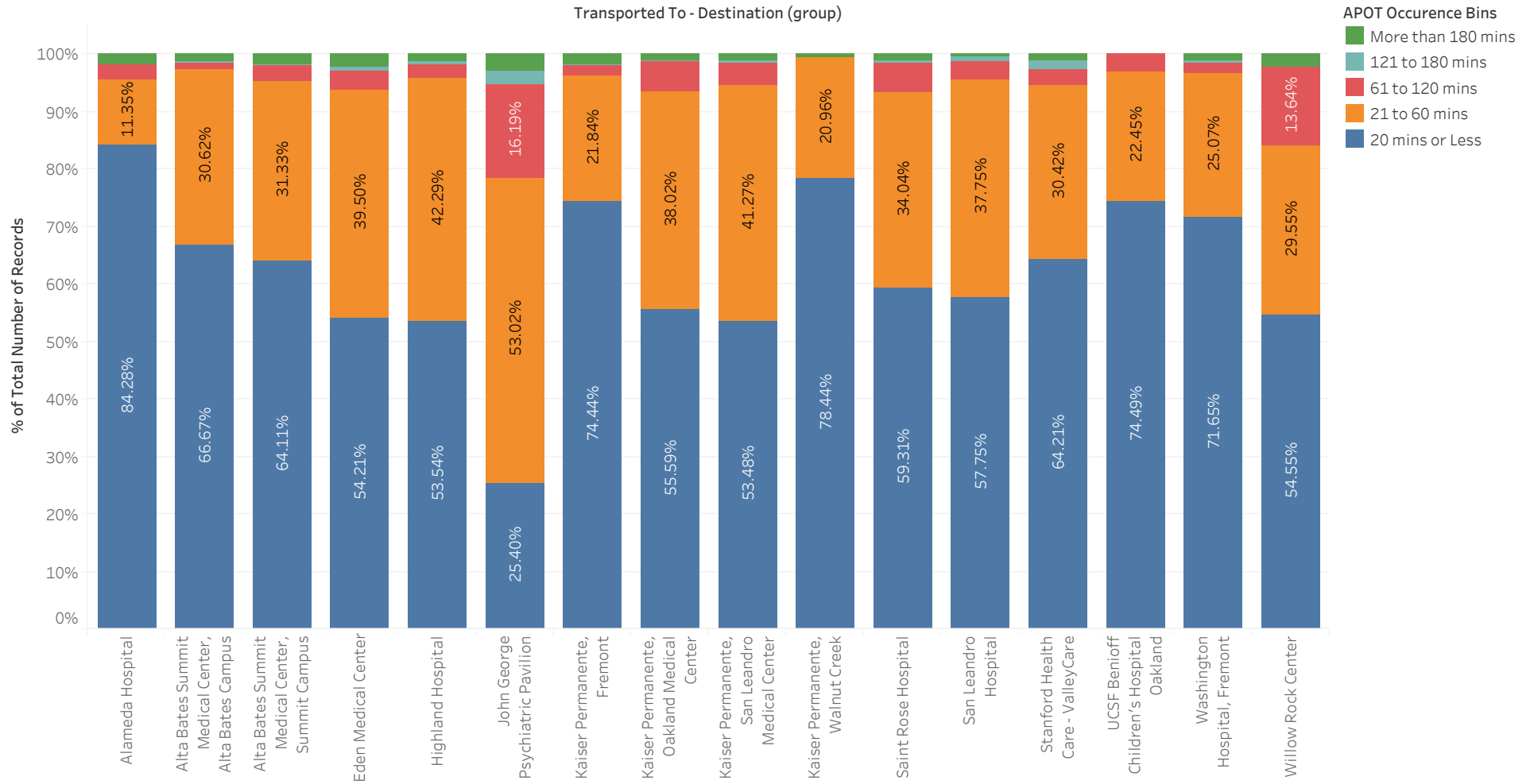
Summary - March 2020

Transported To - Destination (group)	Avg. TOC	Percentile (90) of TOC	APOD > 60 min	APOD % of N	
Alameda Hospital	22.4	25.4	10	4%	229
Alta Bates Summit Medical Center, Alta Bates Campus	37.3	39.0	10	3%	369
Alta Bates Summit Medical Center, Summit Campus	44.0	41.4	47	5%	1,031
Eden Medical Center	47.8	47.8	50	6%	795
Highland Hospital	39.1	44.0	46	4%	1,102
John George Psychiatric Pavilion	69.6	91.6	68	22%	315
Kaiser Permanente, Fremont	37.5	33.0	15	4%	403
Kaiser Permanente, Oakland Medical Center	36.1	50.0	40	6%	626
Kaiser Permanente, San Leandro Medical Center	39.4	47.4	34	5%	647
Kaiser Permanente, Walnut Creek	17.7	26.0	1	1%	167
Saint Rose Hospital	30.2	46.0	25	7%	376
San Leandro Hospital	30.1	40.1	18	5%	400
Stanford Health Care - ValleyCare	24.6	43.0	27	5%	503
UCSF Benioff Children's Hospital Oakland	16.6	31.5	3	3%	98
Washington Hospital, Fremont	29.3	37.0	23	3%	702
Willow Rock Center	61.0	88.0	7	16%	44
Grand Total					7,807

APOT Bins

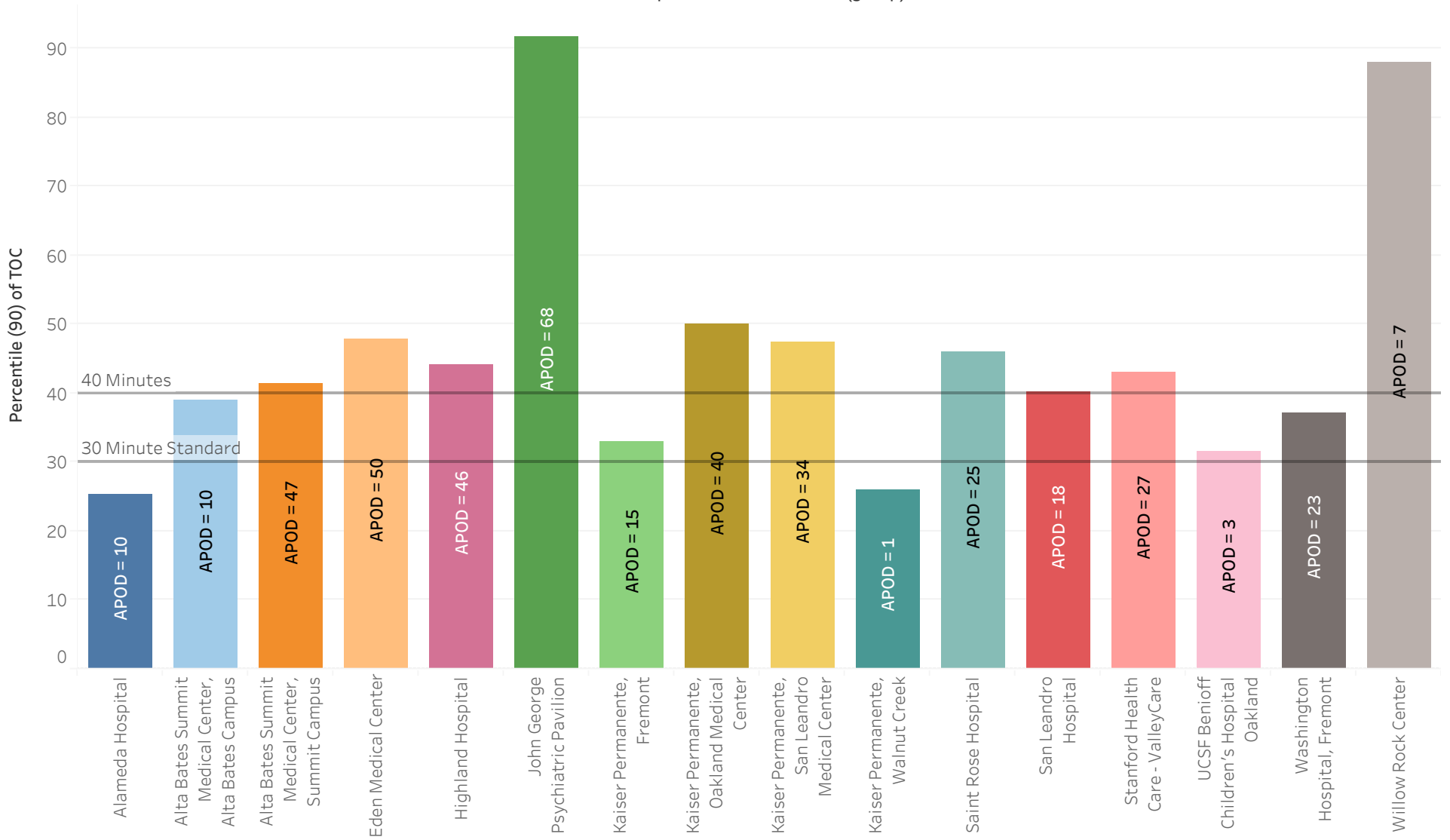
Transported To - Destinat..	APOT Occurrence Bins					Grand T..
	20 mins..	21 to 6..	61 to 1..	121 to ..	More th..	
Alameda Hospital	193 84.28%	26 11.35%	6 2.62%		4 1.75%	229 100.00%
Alta Bates Summit Medical Center, Alta Bates Campus	246 66.67%	113 30.62%	4 1.08%	1 0.27%	5 1.36%	369 100.00%
Alta Bates Summit Medical Center, Summit Campus	661 64.11%	323 31.33%	26 2.52%	2 0.19%	19 1.84%	1,031 100.00%
Eden Medical Center	431 54.21%	314 39.50%	28 3.52%	5 0.63%	17 2.14%	795 100.00%
Highland Hospital	590 53.54%	466 42.29%	28 2.54%	3 0.27%	15 1.36%	1,102 100.00%
John George Psychiatric Pavilion	80 25.40%	167 53.02%	51 16.19%	8 2.54%	9 2.86%	315 100.00%
Kaiser Permanente, Fremont	300 74.44%	88 21.84%	7 1.74%	1 0.25%	7 1.74%	403 100.00%
Kaiser Permanente, Oakland Medical Center	348 55.59%	238 38.02%	32 5.11%	2 0.32%	6 0.96%	626 100.00%
Kaiser Permanente, San Leandro Medical Center	346 53.48%	267 41.27%	24 3.71%	3 0.46%	7 1.08%	647 100.00%
Kaiser Permanente, Walnut Creek	131 78.44%	35 20.96%			1 0.60%	167 100.00%
Saint Rose Hospital	223 59.31%	128 34.04%	19 5.05%	2 0.53%	4 1.06%	376 100.00%
San Leandro Hospital	231 57.75%	151 37.75%	13 3.25%	3 0.75%	2 0.50%	400 100.00%
Stanford Health Care - ValleyCare	323 64.21%	153 30.42%	14 2.78%	8 1.59%	5 0.99%	503 100.00%
UCSF Benioff Children's Hospital Oakland	73 74.49%	22 22.45%	3 3.06%			98 100.00%
Washington Hospital, Fremont	503 71.65%	176 25.07%	13 1.85%	3 0.43%	7 1.00%	702 100.00%
Willow Rock Center	24 54.55%	13 29.55%	6 13.64%		1 2.27%	44 100.00%
Grand Total	4,703 60.24%	2,680 34.33%	274 3.51%	41 0.53%	109 1.40%	7,807 100.00%

APOT Bins Graph



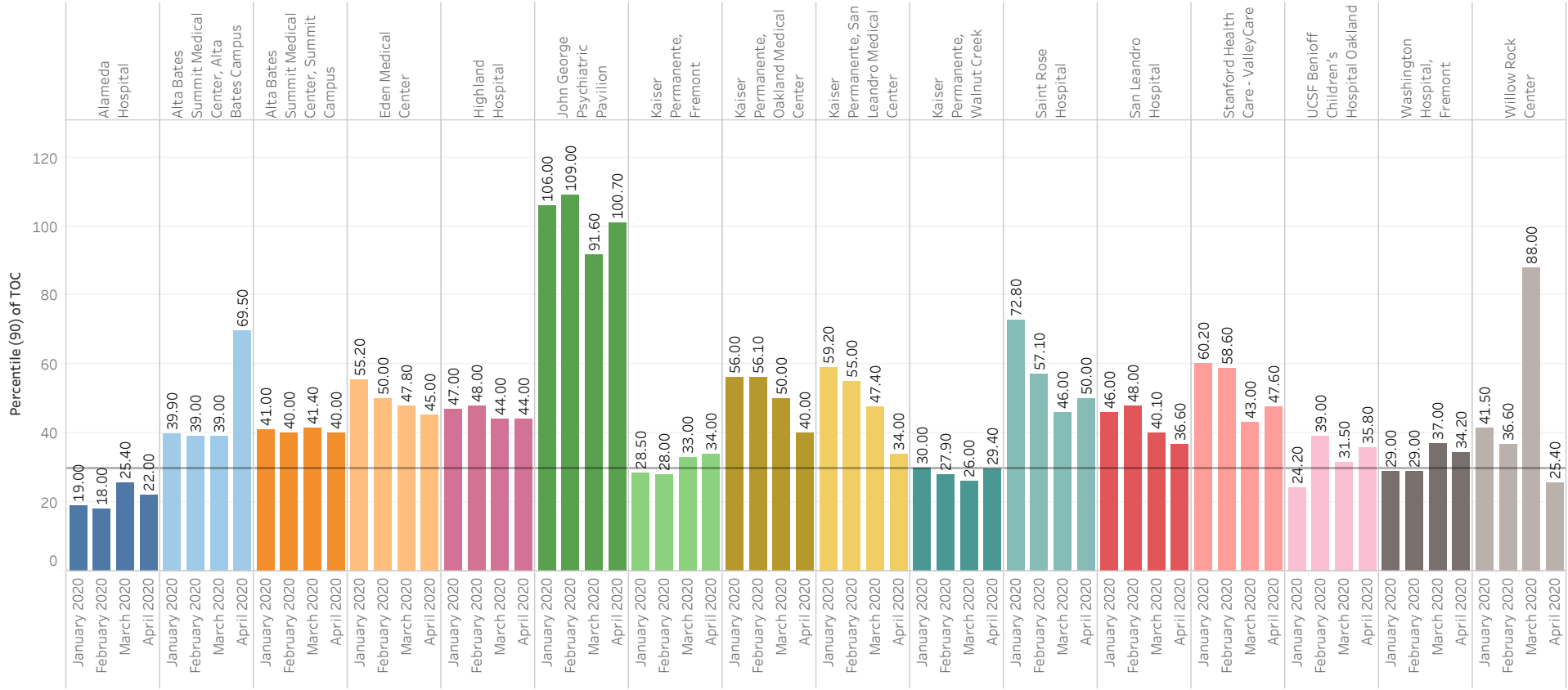
Current Month 90% APOT

Transported To - Destination (group)

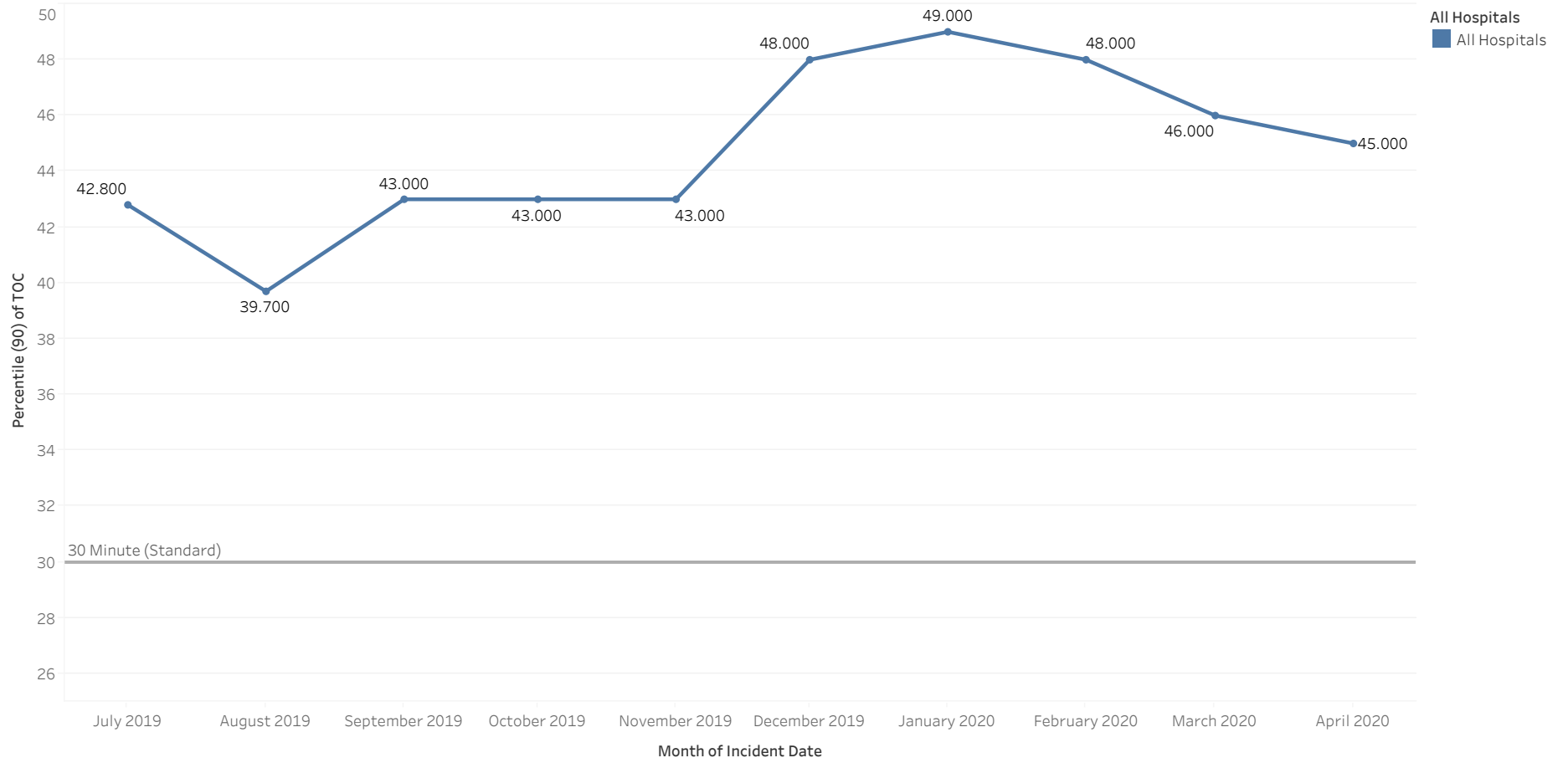


Prev Month 90% APOT

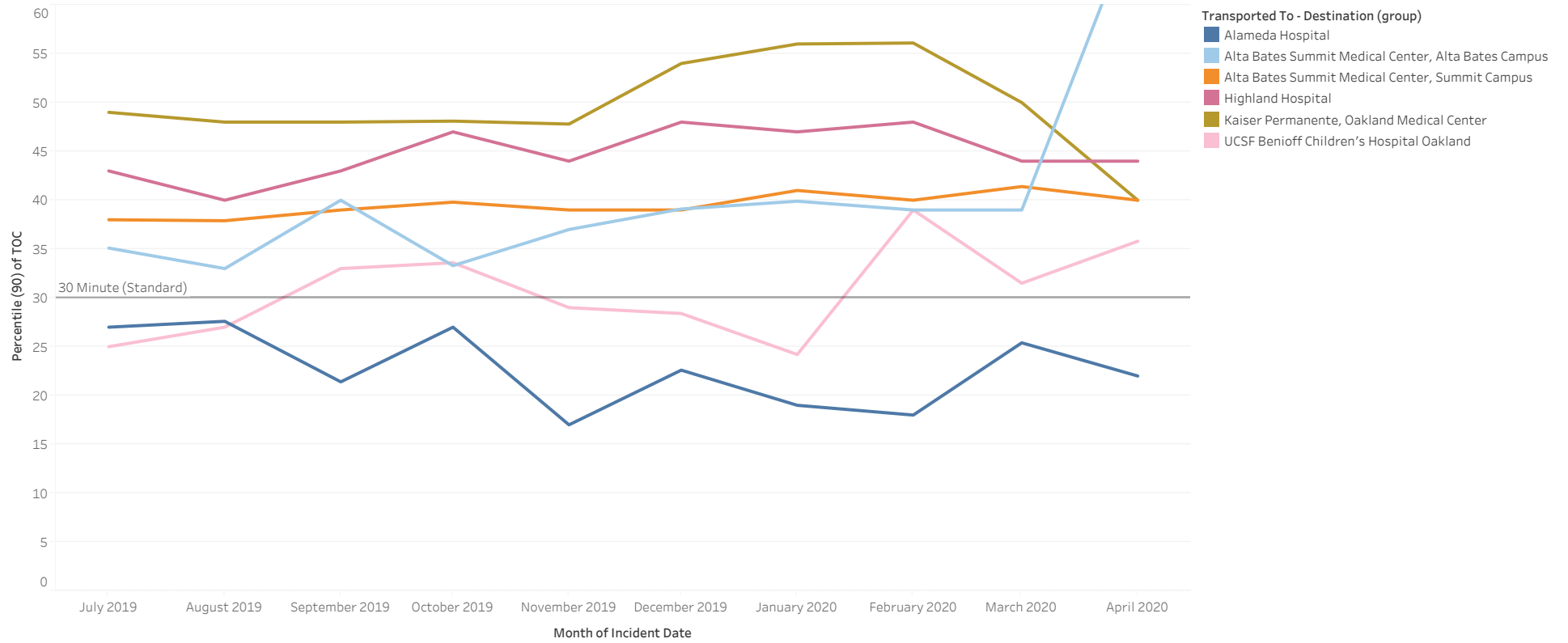
Transported To - Destination (group) / Month of Incident Date



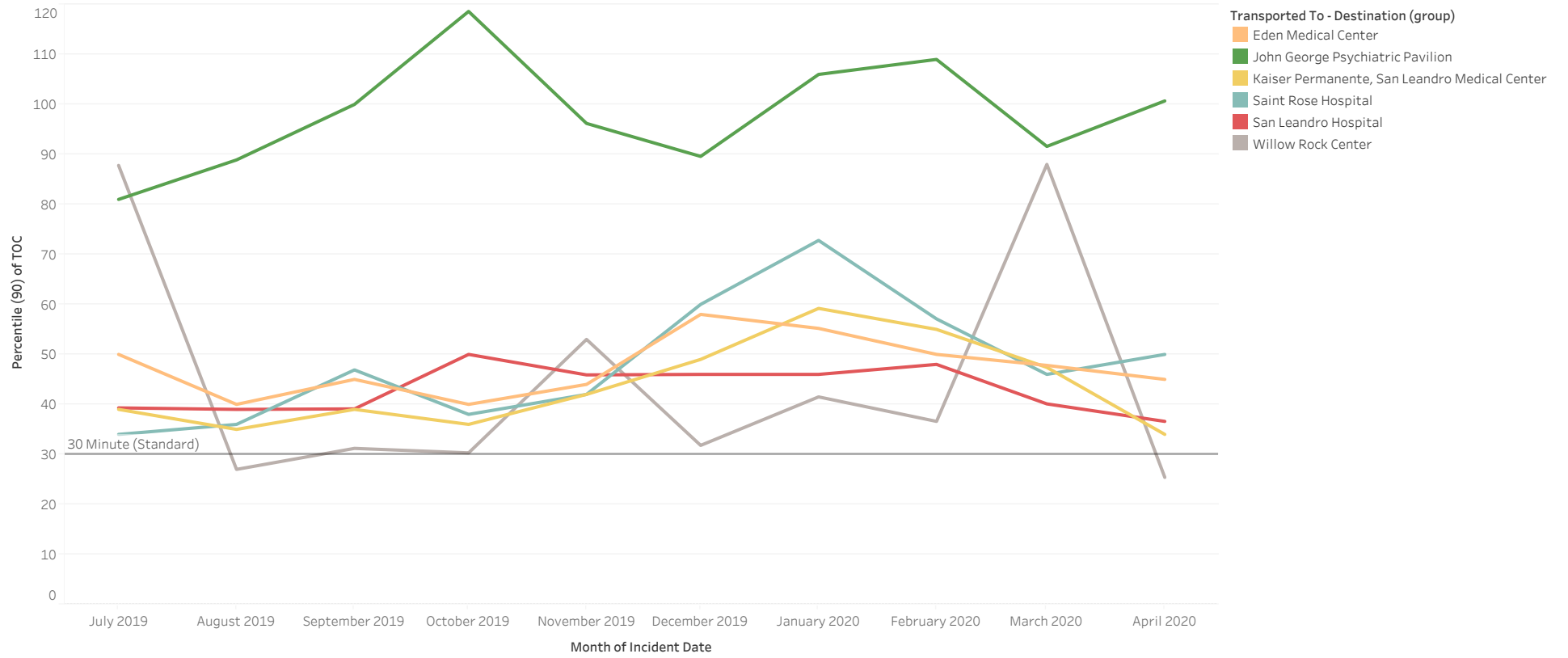
All Hospital 90% APOT



North 90% APOT



Mid 90% APOT



South and East 90% APOT

